



NDL Industries

ACR Copper Fittings Product Guide

High-Quality HVAC-R Components for Commercial,
Industrial, and Residential Applications





ACR Copper Fittings

Table of Contents

Product Information	1, 2
Female Adapters	2
Male Adapters	2
Reducing Bushings	2, 3, 4
Caps	4
No Stop Couplings	5, 6
Reducing Couplings	6, 7
Roll Stop Couplings	7
Stake Stop Couplings	8
45° Elbows	8
45° Street Elbows	8
90° Long Radius Elbows	9
90° Long Radius Reducing Elbows	9
90° Long Radius Street Elbows	9, 10
90° Short Radius Elbows	10
90° Short Radius Reducing Elbows	11
90° Short Radius Street Elbows	11
P-Traps	11
Return Bends	11, 12
Tees	12
Reducing Tees	12, 13, 14, 15
Unions	15





ACR Copper Fittings

Innovative HVAC-R Products with High-Quality Performance

- NDL ensures copper quality content and strict adherence to meet or exceed ASME B16.22 standards for wall thickness.
- Our ACR copper fittings are tested for actual burst pressure and approved by TSSA.
- Each fitting is marked with OD size for easy field identification.
- Fittings are poly-bagged within the box, keeping them clean and contaminant-free prior to installation.
- The fittings have tight tolerances on the cup side for a stronger joint with the tube and easier brazing.
- The unparalleled NDL 10 Year Ultimate Protection Warranty will cover the loss of refrigerant and labor to replace the failed fitting.
- Our copper fittings have zero reported failures since 1999.

Certifications and Approvals

- TSSA
- CRN Approved
- ANSI/ASME B16.22
- UL Certified (SA45869) for sizes up to and including 2-5/8"

Symbols

- C** Copper (cup) manufactured to receive copper tube diameter
- FTG** Fittings end made to copper tube diameter
- F** Female, internal ANSI Standard taper pipe thr-d (NPTI)
- M** Male, external ANSI Standard taper pipe thr-d (NPTE)





ACR Copper Fittings

Design Pressure Table

SIZE (IN)	PSI (AT 250 °F)	BAR (AT 121 °C)
1/4"	1000	68.9
3/8"	1000	68.9
1/2"	1000	68.9
5/8"	1000	68.9
3/4"	1000	68.9
7/8"	900	62
1-1/8"	700	48.2
1-3/8"	700	48.2
1-5/8"	700	48.2
2-1/8"	700	48.2
2-5/8"	700	48.2
Above 2-5/8" according to ASME B16.22		

**Design Pressure Table is based on UL Certification (SA45869)*





Female Adapters (C x F)

PART #	OD - DESCRIPTION	BOX QTY	WT (LB)	WT (G)
W1215	3/8" x 1/4" Female Adapter	50	0.033	15.0
W1231	5/8" x 1/2" Female Adapter	50	0.079	36.0
W1232	5/8" x 3/8" Female Adapter	50	0.079	36.0
W1224	1/2" x 1/2" Female Adapter	50	0.090	41.0
W1230	5/8" x 3/4" Female Adapter	25	0.110	50.0
W1246	7/8" x 3/4" Female Adapter	25	0.141	64.0
W1238	3/4" x 3/4" Female Adapter	25	0.141	64.0
W1263	1-1/8" x 1" Female Adapter	25	0.229	104.0
W1271	1-3/8" x 1-1/4" Female Adapter	10	0.331	150.0
W1279	1-5/8" x 1-1/2" Female Adapter	10	0.459	208.0
W1287	2-1/8" x 2" Female Adapter	5	0.705	320.0



Male Adapters (C x M)

PART #	OD - DESCRIPTION	BOX QTY	WT (LB)	WT (G)
W1132	5/8" x 3/8" Male Adapter	50	0.079	36
W1146	7/8" x 3/4" Male Adapter	50	0.128	58
W1130	5/8" x 3/4" Male Adapter	25	0.13	59
W1138	3/4" x 3/4" Male Adapter	25	0.141	64
W1145	7/8" x 1" Male Adapter	10	0.22	100
W1163	1-1/8" x 1" Male Adapter	25	0.229	104
W1172	1-3/8" x 1" Male Adapter	10	0.28	127
W1171	1-3/8" x 1-1/4" Male Adapter	20	0.331	150
W1180	1-5/8" x 1-1/4" Male Adapter	10	0.45	204
W1179	1-5/8" x 1-1/2" Male Adapter	10	0.461	209
W1187	2-1/8" x 2" Male Adapter	5	0.71	322



Reducing Bushings (FTG x C)

PART #	OD - DESCRIPTION	BOX QTY	WT (LB)	WT (G)
W1306	3/8" x 1/4" Reducing Bushing	50	0.009	4.082
W1312	1/2" x 3/8" Reducing Bushing	50	0.015	6.759



Reducing Bushings (FTG x C) - Continued

PART #	OD - DESCRIPTION	BOX QTY	WT (LB)	WT (G)
W1314	1/2" x 1/4" Reducing Bushing	50	0.014	6.486
W1315	5/8" x 1/2" Reducing Bushing	50	0.027	12.066
W1317	5/8" x 3/8" Reducing Bushing	50	0.027	12.383
W1320	3/4" x 5/8" Reducing Bushing	50	0.041	18.507
W1321	3/4" x 1/2" Reducing Bushing	50	0.038	17.327
W1325	7/8" x 3/4" Reducing Bushing	50	0.067	30.345
W1326	7/8" x 5/8" Reducing Bushing	50	0.066	29.982
W1327	7/8" x 1/2" Reducing Bushing	50	0.065	29.483
W1328	7/8" x 3/8" Reducing Bushing	50	0.065	29.393
W1337	1-1/8" x 7/8" Reducing Bushing	25	0.115	51.982
W1338	1-1/8" x 3/4" Reducing Bushing	25	0.104	46.992
W1339	1-1/8" x 5/8" Reducing Bushing	25	0.106	47.990
W1340	1-1/8" x 1/2" Reducing Bushing	25	0.108	48.988
W1343	1-3/8" x 1-1/8" Reducing Bushing	10	0.174	78.970
W1345	1-3/8" x 7/8" Reducing Bushing	10	0.146	65.998
W1347	1-3/8" x 5/8" Reducing Bushing	10	0.150	67.993
W1350	1-5/8" x 1-3/8" Reducing Bushing	10	0.236	106.957
W1351	1-5/8" x 1-1/8" Reducing Bushing	10	0.240	108.998
W1353	1-5/8" x 7/8" Reducing Bushing	10	0.231	104.961
W1355	1-5/8" x 5/8" Reducing Bushing	10	0.231	104.961
W1358	2-1/8" x 1-5/8" Reducing Bushing	15	0.419	189.964
W1359	2-1/8" x 1-3/8" Reducing Bushing	15	0.370	167.965
W1360	2-1/8" x 1-1/8" Reducing Bushing	15	0.370	167.965
W1362	2-1/8" x 7/8" Reducing Bushing	15	0.386	174.996
W1364	2-1/8" x 5/8" Reducing Bushing	15	0.386	174.996
W1367	2-5/8" x 2-1/8" Reducing Bushing	12	0.644	291.977
W1368	2-5/8" x 1-5/8" Reducing Bushing	15	0.600	271.974
W1369	2-5/8" x 1-3/8" Reducing Bushing	15	0.617	279.957
W1370	2-5/8" x 1-1/8" Reducing Bushing	10	0.551	249.975
W1376	3-1/8" x 2-5/8" Reducing Bushing	6	0.904	409.956
W1377	3-1/8" x 2-1/8" Reducing Bushing	6	0.904	409.956
W1379	3-1/8" x 1-3/8" Reducing Bushing	6	0.882	399.977





Reducing Bushings (FTG x C) - Continued

PART #	OD - DESCRIPTION	BOX QTY	WT (LB)	WT (G)
W1381	3-5/8" x 3-1/8" Reducing Bushing	4	1.378	624.959
W1383	3-5/8" x 2-1/8" Reducing Bushing	4	1.499	679.980
W1387	4-1/8" x 3-1/8" Reducing Bushing	2	1.984	899.972
W1388	4-1/8" x 2-5/8" Reducing Bushing	2	2.028	919.975



Caps (C)

PART #	OD - DESCRIPTION	BOX QTY	WT (LB)	WT (G)
W7002	1/4" Cap	50	0.003	1.5
W7004	3/8" Cap	100	0.005	2.3
W7006	1/2" Cap	50	0.009	4.0
W7007	5/8" Cap	100	0.015	7.0
W7008	3/4" Cap	50	0.026	12.0
W7009	7/8" Cap	50	0.033	15.0
W7011	1-1/8" Cap	50	0.066	30.0
W7012	1-3/8" Cap	25	0.104	47.0
W7013	1-5/8" Cap	25	0.148	67.0
W7014	2-1/8" Cap	10	0.265	120.0
W7015	2-5/8" Cap	10	0.441	200.0
W7016	3-1/8" Cap	2	0.540	245.0
W7018	4-1/8" Cap	EA	1.257	570.0



No Stop Couplings (C x C)

PART #	OD - DESCRIPTION	BOX QTY	WT (LB)	WT (G)
W1900	1/4" No Stop Coupling	100	0.006	2.5
W1901	3/8" No Stop Coupling	50	0.009	4.0
W1902	1/2" No Stop Coupling	50	0.015	6.9
W1903	5/8" No Stop Coupling	100	0.024	11.0
W1904	3/4" No Stop Coupling	25	0.044	20.0
W1905	7/8" No Stop Coupling	50	0.088	40.0



No Stop Couplings (C x C) - Continued

PART #	OD - DESCRIPTION	BOX QTY	WT (LB)	WT (G)
W1906	1-1/8" No Stop Coupling	25	0.106	48.0
W1907	1-3/8" No Stop Coupling	25	0.165	74.8



Reducing Couplings (C x C)

PART #	OD - DESCRIPTION	BOX QTY	WT (LB)	WT (G)
W1011	3/8" x 1/4" Reducing Coupling	50	0.01	4.581
W1010	3/8" x 5/16" Reducing Coupling	50	0.011	4.99
W1021	1/2" x 1/4" Reducing Coupling	50	0.016	7.076
W1019	1/2" x 3/8" Reducing Coupling	50	0.017	7.575
W1023	5/8" x 1/2" Reducing Coupling	100	0.033	15.059
W1025	5/8" x 3/8" Reducing Coupling	100	0.033	14.969
W1027	5/8" x 1/4" Reducing Coupling	100	0.035	15.785
W1031	3/4" x 3/8" Reducing Coupling	100	0.04	17.962
W1029	3/4" x 5/8" Reducing Coupling	100	0.045	20.593
W1030	3/4" x 1/2" Reducing Coupling	100	0.046	20.956
W1038	7/8" x 3/8" Reducing Coupling	50	0.056	25.401
W1037	7/8" x 1/2" Reducing Coupling	50	0.061	27.805
W1035	7/8" x 3/4" Reducing Coupling	50	0.072	32.477
W1036	7/8" x 5/8" Reducing Coupling	50	0.075	33.974
W1052	1-1/8" x 1/2" Reducing Coupling	25	0.099	44.996
W1050	1-1/8" x 3/4" Reducing Coupling	25	0.115	51.982
W1051	1-1/8" x 5/8" Reducing Coupling	25	0.115	51.982
W1049	1-1/8" x 7/8" Reducing Coupling	25	0.121	54.975
W1060	1-3/8" x 5/8" Reducing Coupling	10	0.165	74.979
W1058	1-3/8" x 7/8" Reducing Coupling	10	0.172	77.972
W1056	1-3/8" x 1-1/8" Reducing Coupling	10	0.187	84.958
W1069	1-5/8" x 5/8" Reducing Coupling	10	0.209	94.982
W1065	1-5/8" x 1-1/8" Reducing Coupling	10	0.247	111.992
W1067	1-5/8" x 7/8" Reducing Coupling	10	0.255	115.485
W1064	1-5/8" x 1-3/8" Reducing Coupling	10	0.287	129.999
W1075	2-1/8" x 1-1/8" Reducing Coupling	15	0.366	165.969





Reducing Couplings (C x C) - Continued

PART #	OD - DESCRIPTION	BOX QTY	WT (LB)	WT (G)
W1074	2-1/8" x 1-3/8" Reducing Coupling	15	0.384	173.998
W1073	2-1/8" x 1-5/8" Reducing Coupling	15	0.397	179.985
W1079	2-1/8" x 5/8" Reducing Coupling	15	0.397	179.985
W1077	2-1/8" x 7/8" Reducing Coupling	15	0.401	181.845
W1086	2-5/8" x 1-1/8" Reducing Coupling	12	0.606	274.967
W1085	2-5/8" x 1-3/8" Reducing Coupling	12	0.661	299.96
W1083	2-5/8" x 2-1/8" Reducing Coupling	12	0.679	307.989
W1084	2-5/8" x 1-5/8" Reducing Coupling	12	0.679	307.989
W1095	3-1/8" x 1-5/8" Reducing Coupling	6	0.882	399.977
W1094	3-1/8" x 2-1/8" Reducing Coupling	6	0.957	433.997
W1093	3-1/8" x 2-5/8" Reducing Coupling	6	1.019	461.983
W10109	4-1/8" x 3-1/8" Reducing Coupling	EA	2.094	949.958
W10110	4-1/8" x 2-5/8" Reducing Coupling	EA	2.094	949.958



Roll Stop Couplings (C x C)

PART #	OD - DESCRIPTION	BOX QTY	WT (LB)	WT (G)
W1003	1/4" Coupling w/roll stop	100	0.006	2.676
W1009	3/8" Coupling w/roll stop	50	0.009	4.173
W1017	1/2" Coupling w/roll stop	50	0.016	7.076
W1022	5/8" Coupling w/roll stop	100	0.03	13.472
W1028	3/4" Coupling w/roll stop	50	0.043	19.459
W1034	7/8" Coupling w/roll stop	50	0.091	41.458
W1047	1-1/8" Coupling w/roll stop	25	0.151	68.492
W1055	1-3/8" Coupling w/roll stop	25	0.165	74.979
W1063	1-5/8" Coupling w/roll stop	10	0.245	110.994
W1072	2-1/8" Coupling w/roll stop	6	0.425	192.958
W1082	2-5/8" Coupling w/roll stop	4	0.723	327.992
W1092	3-1/8" Coupling w/roll stop	4	1.03	466.973
W10100	3-5/8" Coupling w/roll stop	EA	1.373	622.963
W10107	4-1/8" Coupling w/roll stop	EA	2.094	949.958





Stake Stop Couplings (C x C)

PART #	OD - DESCRIPTION	BOX QTY	WT (LB)	WT (G)
W10142	5/16" Stake Stop Coupling	100	0.008	3.8



45° Elbows (C x C)

PART #	OD - DESCRIPTION	BOX QTY	WT (LB)	WT (G)
W3005	1/4" 45° Elbow	100	0.008	3.8
W3012	3/8" 45° Elbow	50	0.013	6.0
W3021	1/2" 45° Elbow	50	0.033	15.0
W3026	5/8" 45° Elbow	50	0.038	17.3
W3030	3/4" 45° Elbow	50	0.068	31.0
W3034	7/8" 45° Elbow	25	0.104	47.0
W3044	1-1/8" 45° Elbow	25	0.190	86.0
W3050	1-3/8" 45° Elbow	10	0.278	126.0
W3055	1-5/8" 45° Elbow	10	0.375	170.0
W3059	2-1/8" 45° Elbow	10	0.602	273.0
W3063	2-5/8" 45° Elbow	4	1.102	500.0
W3067	3-1/8" 45° Elbow	2	1.612	731.0



45° Street Elbows (FTG x C)

PART #	OD - DESCRIPTION	BOX QTY	WT (LB)	WT (G)
W3305	1/4" 45° Street Elbow	EA	0.008	3.8
W3312	3/8" 45° Street Elbow	100	0.014	6.5
W3321	1/2" 45° Street Elbow	100	0.028	12.7
W3326	5/8" 45° Street Elbow	50	0.038	17.2
W3330	3/4" 45° Street Elbow	50	0.066	30.0
W3334	7/8" 45° Street Elbow	25	0.099	45.0
W3344	1-1/8" 45° Street Elbow	25	0.179	81.0
W3350	1-3/8" 45° Street Elbow	10	0.254	115.0
W3355	1-5/8" 45° Street Elbow	10	0.351	159.0
W3359	2-1/8" 45° Street Elbow	5	0.619	281.0
W3363	2-5/8" 45° Street Elbow	2	1.080	490.0



90° Long Radius Elbows (C x C)

PART #	OD - DESCRIPTION	BOX QTY	WT (LB)	WT (G)
W2715	1/4" 90° Long Radius Elbow	50	0.014	6.3
W2710	5/16" 90° Long Radius Elbow	50	0.022	10.0
W2716	3/8" 90° Long Radius Elbow	50	0.051	23.0
W2717	1/2" 90° Long Radius Elbow	50	0.051	23.0
W2722	5/8" 90° Long Radius Elbow	50	0.088	40.0
W2728	3/4" 90° Long Radius Elbow	50	0.104	47.0
W2734	7/8" 90° Long Radius Elbow	25	0.199	90.3
W2747	1-1/8" 90° Long Radius Elbow	10	0.401	182.0
W2055	1-3/8" 90° Long Radius Elbow	10	0.417	189.0
W2063	1-5/8" 90° Long Radius Elbow	5	0.575	261.0
W2072	2-1/8" 90° Long Radius Elbow	5	1.174	532.3
W2082	2-5/8" 90° Long Radius Elbow	2	1.896	860.0
W2092	3-1/8" 90° Long Radius Elbow	EA	3.23	1465.1
W2093	3-5/8" 90° Long Radius Elbow	EA	5.732	2600.0
W2095	4-1/8" 90° Long Radius Elbow	EA	6.812	3089.9



90° Long Radius Reducing Elbows (C x C)

PART #	OD - DESCRIPTION	BOX QTY	WT (LB)	WT (G)
W2723	5/8" x 1/2" 90° Long Radius Reducing Elbow	50	0.088	39.961
W2749	1-1/8" x 7/8" 90° Long Radius Reducing Elbow	10	0.276	124.965
W2756	1-3/8" x 1-1/8" 90° Long Radius Reducing Elbow	10	0.430	194.999



90° Long Radius Street Elbows (FTG x C)

PART #	OD - DESCRIPTION	BOX QTY	WT (LB)	WT (G)
W2809	3/8" 90° Long Radius Street Elbow	50	0.043	19.4
W2817	1/2" 90° Long Radius Street Elbow	50	0.049	22.0
W2822	5/8" 90° Long Radius Street Elbow	50	0.057	26.0
W2828	3/4" 90° Long Radius Street Elbow	25	0.101	46.0
W2834	7/8" 90° Long Radius Street Elbow	25	0.196	89.0
W2847	1-1/8" 90° Long Radius Street Elbow	10	0.269	122.0





90° Long Radius Street Elbows (FTG x C) - Continued

PART #	OD - DESCRIPTION	BOX QTY	WT (LB)	WT (G)
W2384	1-3/8" 90° Long Radius Street Elbow	25	0.362	164.0
W2350	1-3/8" 90° Long Radius Street Elbow	10	0.412	187.0
W2385	1-5/8" 90° Long Radius Street Elbow	10	0.467	212.0
W2355	1-5/8" 90° Long Radius Street Elbow	5	0.573	260.0
W2386	2-1/8" 90° Long Radius Street Elbow	5	0.794	360.0
W2359	2-1/8" 90° Long Radius Street Elbow	5	1.167	529.2
W2387	2-5/8" 90° Long Radius Street Elbow	4	1.190	540.0
W2363	2-5/8" 90° Long Radius Street Elbow	2	1.883	854.0
W2368	3-1/8" 90° Long Radius Street Elbow	EA	3.307	1500.0
W2393	3-5/8" 90° Long Radius Street Elbow	EA	5.732	2600.0
W2395	4-1/8" 90° Long Radius Street Elbow	EA	6.812	3090.0



90° Short Radius Elbows (C x C)

PART #	OD - DESCRIPTION	BOX QTY	WT (LB)	WT (G)
W2003	1/4" 90° Short Radius Elbow	50	0.014	6.5
W2009	3/8" 90° Short Radius Elbow	50	0.036	16.5
W2017	1/2" 90° Short Radius Elbow	50	0.031	14.2
W2022	5/8" 90° Short Radius Elbow	50	0.098	44.5
W2028	3/4" 90° Short Radius Elbow	50	0.090	41.0
W2034	7/8" 90° Short Radius Elbow	50	0.121	55.0
W2047	1-1/8" 90° Short Radius Elbow	25	0.238	108.0
W2084	1-3/8" 90° Short Radius Elbow	10	0.331	150.0
W2085	1-5/8" 90° Short Radius Elbow	10	0.463	210.0
W2086	2-1/8" 90° Short Radius Elbow	5	0.761	345.0
W2087	2-5/8" 90° Short Radius Elbow	4	1.323	600.0
W2088	3-1/8" 90° Short Radius Elbow	2	1.764	800.0
W2089	3-5/8" 90° Short Radius Elbow	EA	2.641	1197.9
W2090	4-1/8" 90° Short Radius Elbow	EA	3.792	1720.0





90° Short Radius Reducing Elbows (C x C)

PART #	OD - DESCRIPTION	BOX QTY	WT (LB)	WT (G)
W2011	3/8" x 1/4" 90° Short Radius Reducing Elbow	50	0.031	14.0
W2036	7/8" x 5/8" 90° Short Radius Reducing Elbow	50	0.121	55.0



90° Short Radius Street Elbows (FTG x C)

PART #	OD - DESCRIPTION	BOX QTY	WT (LB)	WT (G)
W2305	1/4" 90° Short Radius Street Elbow	50	0.012	5.5
W2312	3/8" 90° Short Radius Street Elbow	50	0.032	14.4
W2321	1/2" 90° Short Radius Street Elbow	50	0.032	14.6
W2326	5/8" 90° Short Radius Street Elbow	50	0.046	21.0
W2330	3/4" 90° Short Radius Street Elbow	25	0.088	40.0
W2334	7/8" 90° Short Radius Street Elbow	25	0.122	55.2
W2344	1-1/8" 90° Short Radius Street Elbow	25	0.231	105.0



P-Traps

PART #	OD - DESCRIPTION	BOX QTY	WT (LB)	WT (G)
W60999	5/8" P-Trap	10	0.430	195.0
W61008	3/4" P-Trap	10	0.538	244.0
W61000	7/8" P-Trap	5	0.694	315.0
W61001	1-1/8" P-Trap	3	1.071	486.0
W61002	1-3/8" P-Trap	EA	1.367	620.0
W61003	1-5/8" P-Trap	EA	2.315	1050.0
W61009	2-1/8" P-Trap	EA	4.068	1845.0



Return Bends (C x Bend Rad.)

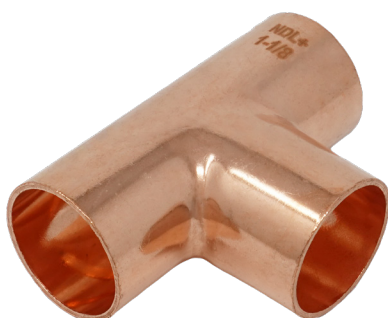
PART #	OD - DESCRIPTION	BOX QTY	WT (LB)	WT (G)
W6032	1/2" x 1-1/2" Return Bend	50	0.057	26.0
W6051	5/8" x 1-9/16" Return Bend	25	0.099	45.0
W6056	5/8" x 2-1/4" Return Bend	25	0.106	48.0





Return Bends (C x Bend Rad.)

PART #	OD - DESCRIPTION	BOX QTY	WT (LB)	WT (G)
W6058	5/8" x 2-1/2" Return Bend	25	0.143	65.0
W6092	7/8" x 2-1/2" Return Bend	10	0.220	100.0
W6095	7/8" x 3-3/8" Return Bend	10	0.278	126.0
W60110	1-1/8" x 3" Return Bend	5	0.412	187.0
W60121	1-3/8" x 3-3/4" Return Bend	4	0.617	280.0
W60131	1-5/8" x 4-1/2" Return Bend	5	0.908	412.0
W60140	2-1/8" x 5-1/2" Return Bend	2	1.764	800.0



Tees (C x C x C)

PART #	OD - DESCRIPTION	BOX QTY	WT (LB)	WT (G)
W40306	1/4" Tee	100	0.016	7.1
W40313	5/16" Tee	50	0.028	12.5
W4000	3/8" Tee	50	0.031	14
W4001	1/2" Tee	50	0.042	19
W4006	5/8" Tee	50	0.077	35
W4017	3/4" Tee	25	0.138	62.5
W4031	7/8" Tee	25	0.198	90
W4048	1-1/8" Tee	10	0.342	155
W4068	1-3/8" Tee	5	0.496	225
W4084	1-5/8" Tee	5	0.747	339
W40102	2-1/8" Tee	5	1.698	770
W40123	2-5/8" Tee	2	2.26	1025
W40152	3-1/8" Tee	2	3.307	1500
W40200	4-1/8" Tee	EA	5.247	2380



Reducing Tees (C x C x C)

PART #	OD - DESCRIPTION	BOX QTY	WT (LB)	WT (G)
W40324	3/8" x 3/8" x 1/4" Reducing Tee	50	0.031	14.0
W40350	1/2" x 1/2" x 1/4" Reducing Tee	50	0.040	18.0
W4002	1/2" x 1/2" x 3/8" Reducing Tee	50	0.041	18.5

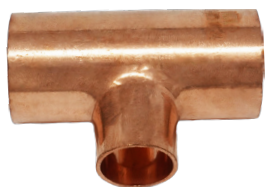




Reducing Tees (C x C x C) - Continued

PART #	OD - DESCRIPTION	BOX QTY	WT (LB)	WT (G)
W4014	5/8" x 5/8" x 1/4" Reducing Tee	50	0.062	28.0
W4008	5/8" x 5/8" x 3/8" Reducing Tee	50	0.071	32.0
W4007	5/8" x 5/8" x 1/2" Reducing Tee	50	0.073	33.0
W4020	3/4" x 3/4" x 3/8" Reducing Tee	25	0.099	45.0
W4019	3/4" x 3/4" x 1/2" Reducing Tee	25	0.129	58.5
W4034	7/8" x 7/8" x 1/2" Reducing Tee	25	0.143	65.0
W4035	7/8" x 7/8" x 3/8" Reducing Tee	25	0.143	65.0
W4033	7/8" x 7/8" x 5/8" Reducing Tee	25	0.144	65.5
W4051	1-1/8" x 1-1/8" x 5/8" Reducing Tee	10	0.209	95.0
W4052	1-1/8" x 1-1/8" x 1/2" Reducing Tee	10	0.209	95.0
W4050	1-1/8" x 1-1/8" x 3/4" Reducing Tee	10	0.249	113.0
W4049	1-1/8" x 1-1/8" x 7/8" Reducing Tee	10	0.265	120.0
W4072	1-3/8" x 1-3/8" x 1/2" Reducing Tee	EA	0.287	130.0
W4071	1-3/8" x 1-3/8" x 5/8" Reducing Tee	5	0.342	155.0
W4088	1-5/8" x 1-5/8" x 5/8" Reducing Tee	5	0.381	173.0
W4070	1-3/8" x 1-3/8" x 7/8" Reducing Tee	5	0.408	185.0
W4069	1-3/8" x 1-3/8" x 1-1/8" Reducing Tee	5	0.419	190.0
W4089	1-5/8" x 1-5/8" x 1/2" Reducing Tee	5	0.578	262.0
W4087	1-5/8" x 1-5/8" x 7/8" Reducing Tee	5	0.595	270.0
W4086	1-5/8" x 1-5/8" x 1-1/8" Reducing Tee	5	0.617	280.0
W40107	2-1/8" x 2-1/8" x 5/8" Reducing Tee	5	0.668	303.0
W40108	2-1/8" x 2-1/8" x 1/2" Reducing Tee	2	0.679	308.0
W4085	1-5/8" x 1-5/8" x 1-3/8" Reducing Tee	5	0.688	312.0
W40106	2-1/8" x 2-1/8" x 7/8" Reducing Tee	5	0.765	347.0
W40105	2-1/8" x 2-1/8" x 1-1/8" Reducing Tee	5	0.937	425.0
W40104	2-1/8" x 2-1/8" x 1-3/8" Reducing Tee	5	1.146	520.0
W40103	2-1/8" x 2-1/8" x 1-5/8" Reducing Tee	5	1.290	585.0
W40124	2-5/8" x 2-5/8" x 2-1/8" Reducing Tee	2	1.510	685.0
W40125	2-5/8" x 2-5/8" x 1-5/8" Reducing Tee	2	1.874	850.0
W40127	2-5/8" x 2-5/8" x 1-1/8" Reducing Tee	2	1.909	866.0
W40129	2-5/8" x 2-5/8" x 5/8" Reducing Tee	2	1.909	866.0
W40150	3-1/8" x 3-1/8" x 2-1/8" Reducing Tee	2	2.275	1032.0





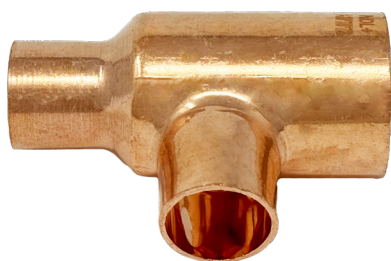
Reducing Tees (C x C x C) - Continued

PART #	OD - DESCRIPTION	BOX QTY	WT (LB)	WT (G)
W40149	3-1/8" x 3-1/8" x 1-5/8" Reducing Tee	2	2.381	1080.0
W40148	3-1/8" x 3-1/8" x 1-3/8" Reducing Tee	2	2.383	1081.0



Reducing Tees (C x C x C)

PART #	OD - DESCRIPTION	BOX QTY	WT (LB)	WT (G)
W40330	3/8" x 1/4" x 3/8" Reducing Tee	50	0.028	12.5
W4003	1/2" x 3/8" x 1/2" Reducing Tee	EA	0.049	22.0
W4009	5/8" x 1/2" x 5/8" Reducing Tee	50	0.077	35.0
W4012	5/8" x 3/8" x 5/8" Reducing Tee	50	0.088	40.0
W4041	7/8" x 5/8" x 7/8" Reducing Tee	25	0.176	80.0
W4055	1-1/8" x 7/8" x 1-1/8" Reducing Tee	10	0.331	150.0
W4061	1-1/8" x 5/8" x 1-1/8" Reducing Tee	10	0.337	153.0
W4078	1-3/8" x 7/8" x 1-3/8" Reducing Tee	5	0.529	240.0
W4090	1-5/8" x 1-3/8" x 1-5/8" Reducing Tee	EA	0.769	349.0
W4095	1-5/8" x 1-1/8" x 1-5/8" Reducing Tee	5	0.774	351.0
W4099	1-5/8" x 7/8" x 1-5/8" Reducing Tee	5	0.783	355.0
W40109	2-1/8" x 1-5/8" x 2-1/8" Reducing Tee	2	1.590	721.0
W40115	2-1/8" x 1-3/8" x 2-1/8" Reducing Tee	EA	1.874	850.0



Reducing Tees (C x C x C)

PART #	OD - DESCRIPTION	BOX QTY	WT (LB)	WT (G)
W4004	1/2" x 3/8" x 3/8" Reducing Tee	50	0.049	22.0
W4010	5/8" x 1/2" x 1/2" Reducing Tee	50	0.068	31.0
W4037	7/8" x 3/4" x 3/4" Reducing Tee	25	0.165	75.0
W4043	7/8" x 5/8" x 5/8" Reducing Tee	25	0.187	85.0
W4056	1-1/8" x 7/8" x 7/8" Reducing Tee	10	0.287	130.0
W4080	1-3/8" x 7/8" x 7/8" Reducing Tee	5	0.441	200.0
W4074	1-3/8" x 1-1/8" x 1-1/8" Reducing Tee	5	0.485	220.0
W4091	1-5/8" x 1-3/8" x 1-3/8" Reducing Tee	5	0.723	328.0
W40110	2-1/8" x 1-5/8" x 1-5/8" Reducing Tee	2	1.323	600.0
W40131	2-5/8" x 2-1/8" x 2-1/8" Reducing Tee	2	1.836	833.0



Reducing Tees (C x C x C)

PART #	OD - DESCRIPTION	BOX QTY	WT (LB)	WT (G)
W4011	5/8" x 1/2" x 3/8" Reducing Tee	50	0.077	35.0
W4045	7/8" x 5/8" x 3/8" Reducing Tee	25	0.165	75.0
W4044	7/8" x 5/8" x 1/2" Reducing Tee	25	0.187	85.0
W4076	1-3/8" x 1-1/8" x 5/8" Reducing Tee	5	0.330	149.9
W4075	1-3/8" x 1-1/8" x 7/8" Reducing Tee	5	0.441	200.0
W4079	1-3/8" x 7/8" x 1-1/8" Reducing Tee	EA	0.549	249.0
W4093	1-5/8" x 1-3/8" x 7/8" Reducing Tee	5	0.661	300.0
W4092	1-5/8" x 1-3/8" x 1-1/8" Reducing Tee	5	0.692	314.0



Reducing Tees (C x C x C)

PART #	OD - DESCRIPTION	BOX QTY	WT (LB)	WT (G)
W40368	1/4" x 1/4" x 3/8" Reducing Tee	50	0.035	16
W4005	3/8" x 3/8" x 1/2" Reducing Tee	50	0.053	24
W4015	1/2" x 1/2" x 5/8" Reducing Tee	50	0.066	30
W4016	3/8" x 3/8" x 5/8" Reducing Tee	50	0.088	40
W4065	7/8" x 7/8" x 1-1/8" Reducing Tee	10	0.309	140
W40100	1-3/8" x 1-3/8" x 1-5/8" Reducing Tee	5	0.727	329.7
W40121	1-5/8" x 1-5/8" x 2-1/8" Reducing Tee	5	1.542	699.4



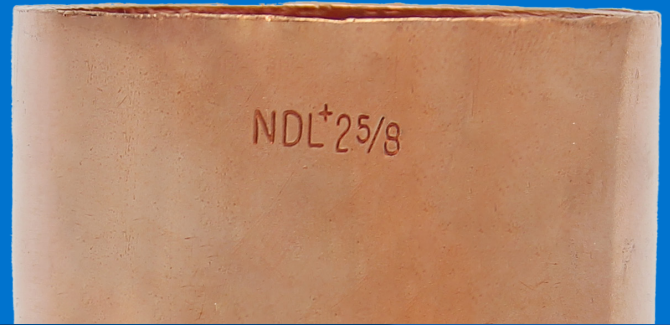
Unions (C x C)

PART #	OD - DESCRIPTION	BOX QTY	WT (LB)	WT (G)
W8003	5/8" Union	25	0.143	65.0
W8004	7/8" Union	25	0.298	135.0
W8005	1-1/8" Union	10	0.514	233.0
A11206	1-5/8" Union	5	0.661	300.0
A11205	1-3/8" Union	10	0.772	350.0
A11207	2-1/8" Union	5	0.882	400.0



QUALITY STAMP

Only after our products pass strict and rigorous quality tests will the NDL name be stamped on them. The NDL Quality Stamp is our seal of approval that our products can be trusted in the field.



We Focus on Quality and Service So You Can Install with Confidence.

Since 1998, our mission has been to stay ahead of the curve as an industry leader in the HVAC, Refrigeration, and Hydronic markets. We have achieved this over the years by heavily emphasizing quality, innovation, and maintaining a global team of experienced professionals to deliver top-notch service. We continue to hold ourselves to the highest standards, never sacrificing the quality of our products or the commitment to our customers that has made us the company we are today.

What you can expect from us:

- Fast order turnaround
- Real-time order communications
- Field-experienced sales and technical support
- Parts packaged in contractor-friendly sized bags
- High-quality control standards for superior fit and finish



Global Team with Fast Order Turnaround

With distribution centers strategically located worldwide, we ensure fast order fulfillment while maintaining the exceptional customer service that has earned us our trusted reputation.

Locations:

- Southaven, Mississippi (United States)
- Vancouver, British Columbia (Canada)
- Milton Keynes, Buckinghamshire (Europe)



Explore our full line of high-quality HVAC-R, CO₂ Refrigeration, and Hydronic products.

ndlindustries.com | 1-866-635-6888 | sales@ndlinc.com

@ndlindustries

