

TECHNICAL SPECIFICATIONS SUBMITTAL FORM

Job Name:	Submittal Date:	Wholesaler:
Job Location:	Engineer/Architect:	Contractor:

Product Use:

A range of valves to include boiler drain valves, water ball valves, press ball valves, and gas shut off valves for use in hydronics applications.

Design and Features:

- Boiler Drain Valves and Quarter Turn Boiler Drain Valves are multi-purpose
- Gas Shut Off Valves feature PTFE seats and NBR O-Rings to reduce contamination buildup
- Ball Valves have a lead-free, full port forged brass body, while Leaded Ball Valves have a leaded brass body
- Ball Valves have a packing gland and O-ring on stem for reliable seal

Operating Specifications:

- Maximum Working Pressure: 125 PSI/Maximum Temperature: 150.80°F (66°C) - Boiler Drain Valves, and Quarter Turn Boiler Valves
- Maximum Working Pressure: 250 PSI/Maximum Temperature: 203°F (95°C) - Gas Shutoff Valves, and Water Press Ball Valves
- Maximum Working Pressure: 600 PSI/Working Temperature: 20 to 300 °F (-28 to 148 °C) . - Water Sweat Ball Valves, Water Sweat Ball Valves with Drain, Water Threaded Ball Valves, and Water Threaded Ball Valves with Drain

Certifications and Approvals:

- ANSI B1.20.01 - Gas Shut Off Valves, Boiler Drain Valves, and Quarter Turn Boiler Valves
- ANSI B1.20.07 - Boiler Drain Valves, and Quarter Turn Boiler Valves
- ASME B16.51 - Water Press Ball Valves
- ASME B16.18/ASME B1.20.1 - Leaded Water Sweat Ball Valves
- ASME A112.18 .1/CSA B125.1 - Boiler Drain Valves, and Quarter Turn Boiler Valves
- CSA Approved - Water Sweat Ball Valves, Water Sweat Ball Valves, Gas Shut Off Valves
- cUPC - Water Press Ball Valves, Water Sweat Ball Valves, Water Sweat Ball Valves with Drain, Boiler Drain Valves, and Quarter Turn Boiler Valves
- FM Approved - Water Sweat Ball Valves, Water Sweat Ball Valves with Drain
- UL Certified - Water Sweat Ball Valves, Water Sweat Ball Valves with Drain
- NSF61 Approved, and conform to NSF372





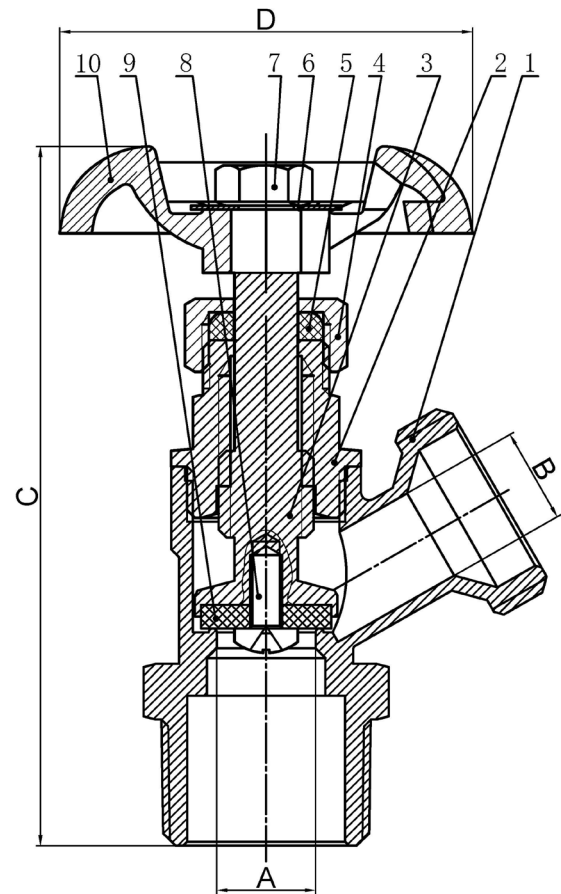
Boiler Drain Valves

Dimensions

	PART #	SIZE	A (IN)	B (IN)	C (IN)	D (IN)	WEIGHT (LB)	WEIGHT (G)
	NBD-012	1/2"	0.428"	0.467"	3.416"	2.023"	0.428	194.1
	NBD-034	3/4"	0.428"	0.467"	3.502"	2.023"	0.472	214.1

Materials

#	PART	MATERIAL
1	BODY	LF Brass
2	GLAND	LF Brass
3	STEM	LF Brass
4	NUT	Brass
5	PACKING	Brass
6	NAMEPLATE	Aluminum Alloy
7	HANDLE NUT	Stainless Steel
8	SCREW	Brass
9	SEALING GASKET	EPDM
10	HANDLE	Cast Iron



The information contained herein is not intended to replace the full product installation and safety information available or the experience of a trained product installer. You are required to thoroughly read all installation instructions and product safety information before beginning the installation of a product.

All installations must completely comply with all NDL Industries warnings and instructions, national state and local codes and all applicable ANSI standards.

NDL Industries product specifications in U.S. customary units and metric are approximate and are provided for reference only. For precise measurements, please contact Customer

Service. NDL Industries reserves the right to change or modify product design, construction, specifications, or materials without prior notice and without incurring any obligation to make such changes and modifications on NDL products previously or subsequently sold.



Explore our full line of high-quality
HVAC-R, CO₂ Refrigeration, and Hydronic products.

ndlindustries.com | 1-866-635-6888 | sales@ndlinc.com

@ndlindustries





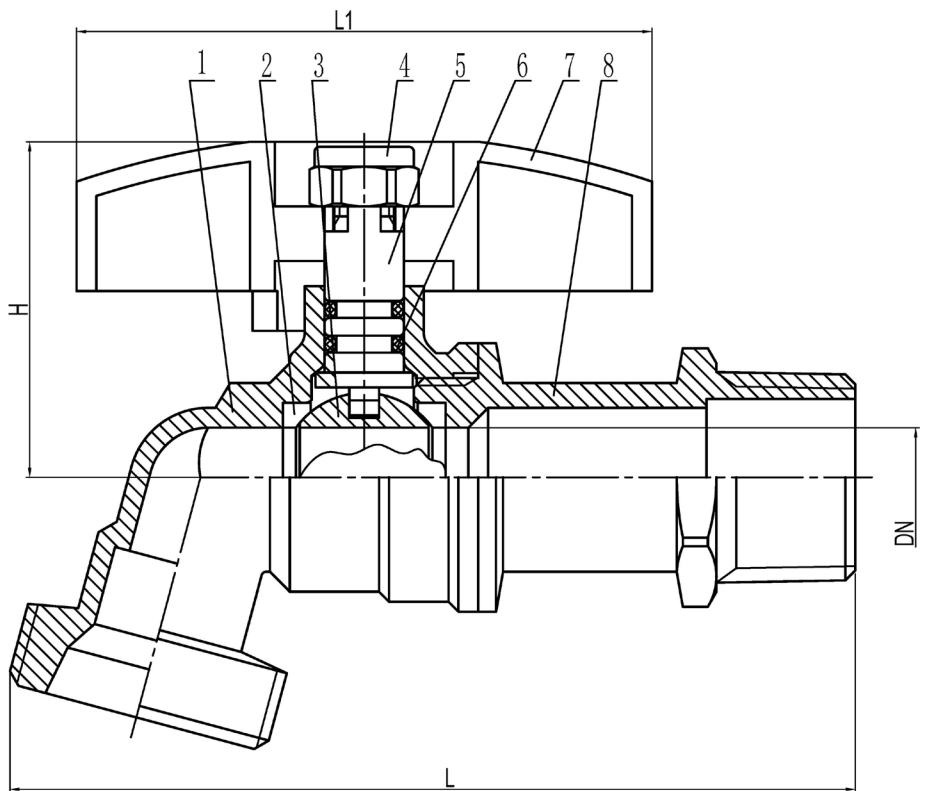
Quarter Turn Boiler Drain Valves

Dimensions

	PART #	SIZE	DN (IN)	L (IN)	H (IN)	L1 (IN)	WEIGHT (LB)	WEIGHT (G)
	NBD-012	1/2"	0.389"	3.307"	1.362"	2.257"	0.403	182.8
	NBD-034	3/4"	0.584"	3.794"	1.498"	2.257"	0.575	260.8

Materials

#	PART	MATERIAL
1	BODY	LF Brass
2	SEALS	PTFE
3	BALL	LF Brass (Chrome Plated)
4	HANDLE NUT	Plated Steel
5	STEM	Brass
6	O-RING	EDPM
7	HANDLE	AL-Alloy
8	GLAND	LF Brass



The information contained herein is not intended to replace the full product installation and safety information available or the experience of a trained product installer. You are required to thoroughly read all installation instructions and product safety information before beginning the installation of a product.

All installations must completely comply with all NDL Industries warnings and instructions, national state and local codes and all applicable ANSI standards.

NDL Industries product specifications in U.S. customary units and metric are approximate and are provided for reference only. For precise measurements, please contact Customer

Service. NDL Industries reserves the right to change or modify product design, construction, specifications, or materials without prior notice and without incurring any obligation to make such changes and modifications on NDL products previously or subsequently sold.



Explore our full line of high-quality
HVAC-R, CO₂ Refrigeration, and Hydronic products.

ndlindustries.com | 1-866-635-6888 | sales@ndlinc.com

@ndlindustries





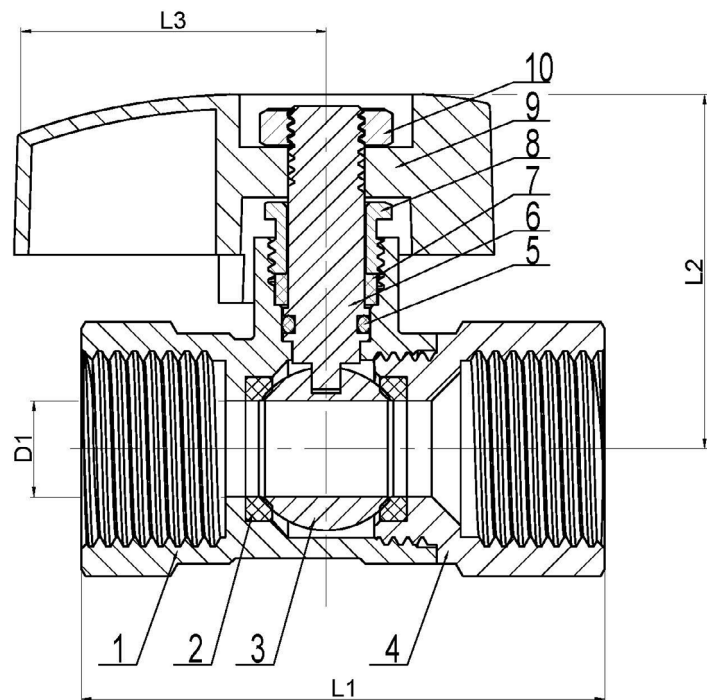
Straight Gas Shut Off Valves (FIP x FIP)

Dimensions

	PART #	SIZE	D1 (IN)	L1 (IN)	L2 (IN)	L3 (IN)	WEIGHT (LB)	WEIGHT (G)
	G01-2806	3/8"	0.311"	1.837"	1.409"	1.265"	0.258	117.0
	G01-2808	1/2"	0.389"	2.121"	1.420"	1.265"	0.331	150.1
	G01-2812	3/4"	0.584"	2.335"	1.576"	1.265"	0.481	218.2
	G01-2801	1"	0.739"	2.840"	1.868"	1.412"	0.761	345.2

Materials

#	PART	MATERIAL
1	BODY	Brass
2	SEAT	PTFE
3	BALL	Brass
4	CAP	Brass
5	O-RING	HNBR
6	STEM	Brass
7	PACKING	PTFE
8	PRESS CAP	Brass
9	HANDLE	Aluminum
10	ANTI-SLIP NUT	Iron



The information contained herein is not intended to replace the full product installation and safety information available or the experience of a trained product installer. You are required to thoroughly read all installation instructions and product safety information before beginning the installation of a product.

All installations must completely comply with all NDL Industries warnings and instructions, national state and local codes and all applicable ANSI standards.

NDL Industries product specifications in U.S. customary units and metric are approximate and are provided for reference only. For precise measurements, please contact Customer.

Service. NDL Industries reserves the right to change or modify product design, construction, specifications, or materials without prior notice and without incurring any obligation to make such changes and modifications on NDL products previously or subsequently sold.



Explore our full line of high-quality
HVAC-R, CO₂ Refrigeration, and Hydronic products.

ndlindustries.com | 1-866-635-6888 | sales@ndlinc.com

@ndlindustries





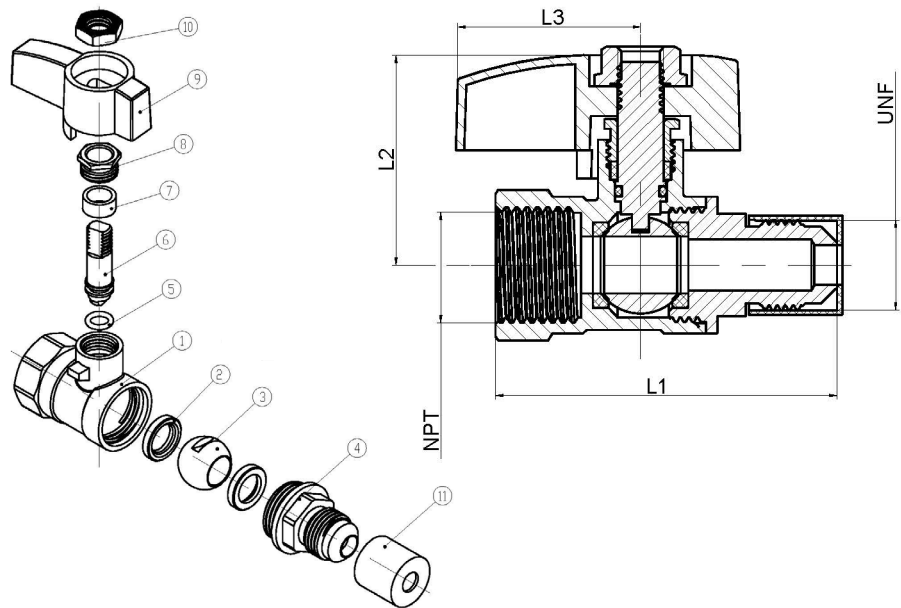
Straight Gas Shut Off Valves (Flare x FIP)

Dimensions

	PART #	SIZE	NPT	UNF	L1 (IN)	L2 (IN)	L3 (IN)	WEIGHT (LB)	WEIGHT (G)
	G01-387	3/8" x 1/2"	1/2" - 14	5/8" - 18	2.335"	1.420"	1.265"	0.32	145.1
	G01-487	1/2" x 1/2"	1/2" - 14	3/4" - 16	2.490"	1.401"	1.265"	0.353	160.1
	G01-587	5/8" (15/16) x 1/2"	1/2" - 14	15/16" - 16	2.626"	1.401"	1.265"	0.388	176.0
	G01-537	1/2" x 3/4"	3/4" - 14	3/4" - 16	2.724"	1.576"	1.265"	0.481	218.2
	G01-687	5/8" (15/16) x 3/4"	3/4" - 14	15/16" - 16	2.821"	1.576"	1.265"	0.527	239.0

Materials

#	PART	MATERIAL
1	BODY	Brass
2	SEAT	PTFE
3	BALL	Brass
4	GLAND	Brass
5	O-RING	HNBR
6	STEM	Brass
7	WASHER	PTFE
8	PACKING NUT	Brass
9	HANDLE	Aluminum
10	LOCK NUT	Steel
11	CAP	PVC



The information contained herein is not intended to replace the full product installation and safety information available or the experience of a trained product installer. You are required to thoroughly read all installation instructions and product safety information before beginning the installation of a product.

All installations must completely comply with all NDL Industries warnings and instructions, national state and local codes and all applicable ANSI standards.

NDL Industries product specifications in U.S. customary units and metric are approximate and are provided for reference only. For precise measurements, please contact Customer

Service. NDL Industries reserves the right to change or modify product design, construction, specifications, or materials without prior notice and without incurring any obligation to make such changes and modifications on NDL products previously or subsequently sold.



Explore our full line of high-quality
HVAC-R, CO₂ Refrigeration, and Hydronic products.

ndlindustries.com | 1-866-635-6888 | sales@ndlinc.com

@ndlindustries





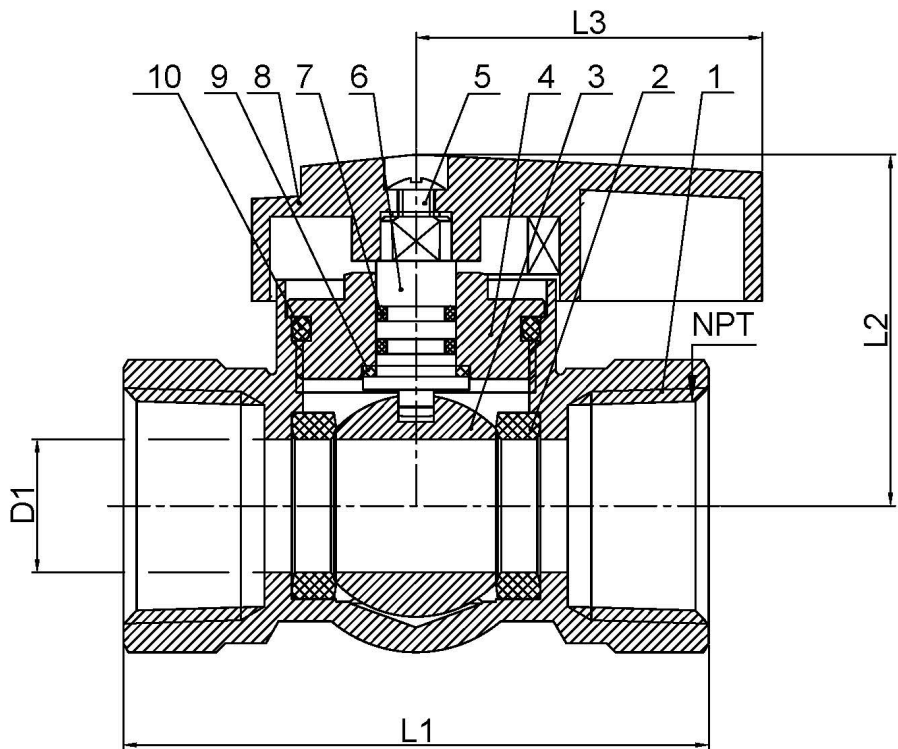
One Piece Valve Bodies

Dimensions

	PART #	SIZE	D1 (IN)	L1 (IN)	L2 (IN)	L3 (IN)	WEIGHT (LB)	WEIGHT (G)
	G01-2809-1PC	1/2"	0.389"	2.335"	1.401"	1.362"	1.003	176.0
	G01-2813-1PC	3/4"	0.584"	2.568"	1.518"	1.459"	0.388	271.2
	G01-2802-1PC	1"	0.739"	3.074"	1.759"	1.790"	0.598	455.0

Materials

#	PART	MATERIAL
1	BODY	Brass
2	SEAT	PTFE
3	BALL	Brass/Chrome Plated
4	CAP	Brass
5	SCREW	Plated Steel
6	STEM	Brass
7	SEALS	NBR
8	HANDLE	AL Alloy
9	PACKING	PTFE
10	O-RING	NBR



The information contained herein is not intended to replace the full product installation and safety information available or the experience of a trained product installer. You are required to thoroughly read all installation instructions and product safety information before beginning the installation of a product.

All installations must completely comply with all NDL Industries warnings and instructions, national state and local codes and all applicable ANSI standards.

NDL Industries product specifications in U.S. customary units and metric are approximate and are provided for reference only. For precise measurements, please contact Customer.

Service. NDL Industries reserves the right to change or modify product design, construction, specifications, or materials without prior notice and without incurring any obligation to make such changes and modifications on NDL products previously or subsequently sold.



Explore our full line of high-quality
HVAC-R, CO₂ Refrigeration, and Hydronic products.

ndlindustries.com | 1-866-635-6888 | sales@ndlinc.com

@ndlindustries





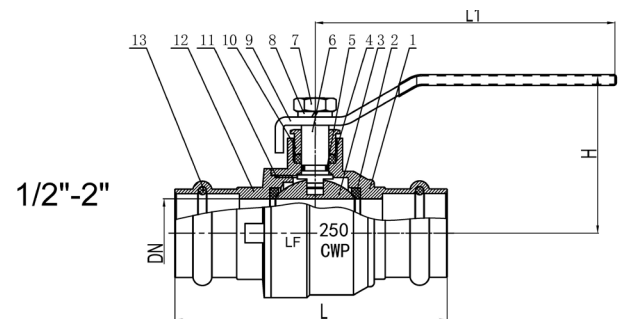
Water Press Ball Valves

Dimensions

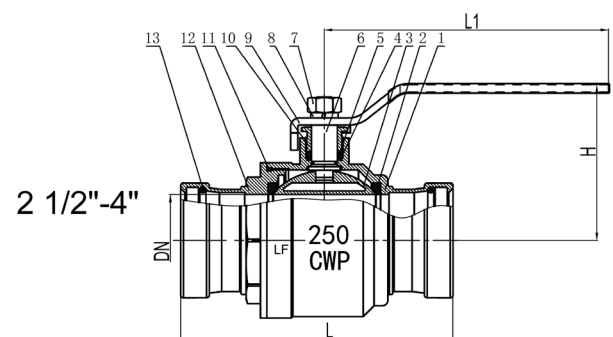
	PART #	SIZE	DN (IN)	L (IN)	L1 (IN)	H (IN)	WEIGHT (LB)	WEIGHT (G)
	NSV-012	1/2"	0.584"	3.152"	3.424"	1.790"	0.47	213.2
	NPV-034	3/4"	0.739"	3.560"	4.241"	2.070"	0.807	366.0
	NPV-100	1"	0.973"	3.872"	4.241"	2.226"	1.142	518.0
	NPV-114	1-1/4"	1.245"	4.358"	5.564"	2.498"	1.669	757.0
	NPV-112	1-1/2"	1.556"	5.292"	5.564"	2.712"	2.582	1171.2
	NPV-200	2"	1.918"	6.420"	5.564"	3.004"	3.585	1626.1
	NPV-212	2-1/2"	2.490"	7.374"	7.588"	4.202"	7.915	3590.2
	NPV-300	3"	2.860"	8.074"	8.093"	4.533"	10.203	4628.0
	NPV-400	4"	3.794"	9.767"	8.949"	5.428"	18.153	8234.1

Materials

#	PART	MATERIAL
1	BODY	LF Brass
2	SEALS	PTFE
3	BALL	Stainless Steel
4	PACKING	PTFE
5	WASHER	NBR
6	STEM	Brass (1/2" - 2")
		Stainless Steel (2-1/2" - 4")
7	HANDLE NUT	Plated Steel
8	LOCK DEVICE	Plated Steel
9	HANDLE	Plated Steel
10	PACKING NUT	Plated Steel
11	GASKET	NBR
12	GLAND	LF Brass
13	O-RING	EPDM



1/2"-2"



2 1/2"-4"

The information contained herein is not intended to replace the full product installation and safety information available or the experience of a trained product installer. You are required to thoroughly read all installation instructions and product safety information before beginning the installation of a product.

All installations must completely comply with all NDL Industries warnings and instructions, national state and local codes and all applicable ANSI standards.

NDL Industries product specifications in U.S. customary units and metric are approximate and are provided for reference only. For precise measurements, please contact Customer

Service. NDL Industries reserves the right to change or modify product design, construction, specifications, or materials without prior notice and without incurring any obligation to make such changes and modifications on NDL products previously or subsequently sold.



Explore our full line of high-quality
HVAC-R, CO₂ Refrigeration, and Hydronic products.

ndlindustries.com | 1-866-635-6888 | sales@ndlinc.com

@ndlindustries





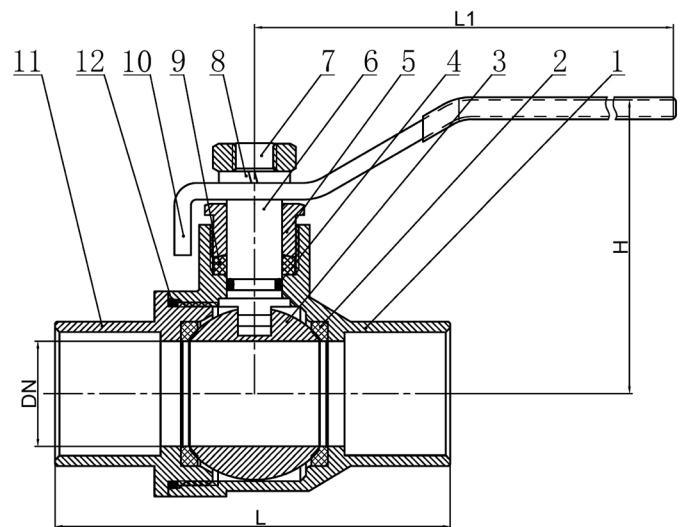
Water Sweat Ball Valves

Dimensions

	PART #	SIZE	DN (IN)	L (IN)	L1 (IN)	H (IN)	WEIGHT (LB)	WEIGHT (G)
	NSV-012	1/2"	0.584"	2.140"	3.424"	1.790"	0.417	189.1
	NSV-034	3/4"	0.739"	2.782"	4.241"	2.070"	0.683	309.8
	NSV-100	1"	0.973"	3.300"	4.241"	2.226"	1.071	485.8
	NSV-114	1-1/4"	1.245"	3.868"	5.564"	2.498"	1.585	718.9
	NSV-112	1-1/2"	1.556"	4.412"	5.564"	2.712"	2.28	1034.2
	NSV-200	2"	1.918"	5.389"	5.564"	3.004"	3.596	1631.1
	NSV-212	2-1/2"	2.490"	6.342"	7.665"	4.202"	6.98	3166.1
	NSV-300	3"	2.860"	7.062"	8.093"	4.533"	8.856	4017.0
	NSV-400	4"	3.794"	9.455"	9.144"	5.428"	17.531	7951.9

Materials

#	PART	MATERIAL
1	BODY	LF Brass
2	SEALS	PTFE
3	BALL	Stainless Steel
4	WASHER	NBR
5	PACKING NUT	HNBR
6	STEM	Brass (1/2" - 2")
		Stainless Steel (2-1/2" - 4")
7	HANDLE NUT	Plated Steel
8	LOCK DEVICE	Plated Steel
9	PACKING	PTFE
10	HANDLE	Plated Steel
11	GLAND	LF Brass
12	O-RING	Viton



The information contained herein is not intended to replace the full product installation and safety information available or the experience of a trained product installer. You are required to thoroughly read all installation instructions and product safety information before beginning the installation of a product.

All installations must completely comply with all NDL Industries warnings and instructions, national state and local codes and all applicable ANSI standards.

NDL Industries product specifications in U.S. customary units and metric are approximate and are provided for reference only. For precise measurements, please contact Customer

Service. NDL Industries reserves the right to change or modify product design, construction, specifications, or materials without prior notice and without incurring any obligation to make such changes and modifications on NDL products previously or subsequently sold.



Explore our full line of high-quality
HVAC-R, CO₂ Refrigeration, and Hydronic products.

ndlindustries.com | 1-866-635-6888 | sales@ndlinc.com

@ndlindustries





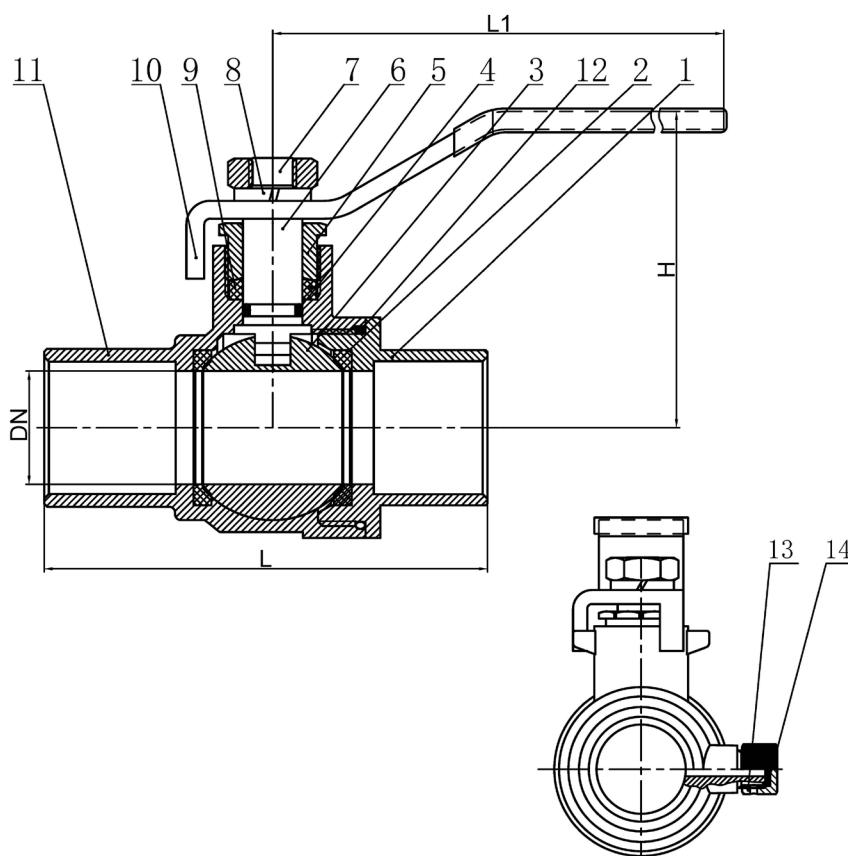
Water Sweat Ball Valves with Drain

Dimensions

	PART #	SIZE	DN (IN)	L (IN)	L1 (IN)	H (IN)	WEIGHT (LB)	WEIGHT (G)
	NWD-012	1/2"	0.584"	2.276"	3.424"	1.790"	0.439	199.1
	NWD-034	3/4"	0.739"	2.899"	4.241"	2.070"	0.717	325.2

Materials

#	PART	MATERIAL
1	GLAND	LF Brass
2	SEALS	PTFE
3	BALL	Stainless Steel
4	WASHER	NBR
5	PACKING	PTFE
6	STEM	Brass
7	HANDLE NUT	Plated Steel
8	LOCK DEVICE	Plated Steel
9	HANDLE	Plated Steel
10	PACKING NUT	Brass
11	BODY	LF Brass
12	O-RING	Viton
13	SCREW	Brass
14	GASKET	EPDM



The information contained herein is not intended to replace the full product installation and safety information available or the experience of a trained product installer. You are required to thoroughly read all installation instructions and product safety information before beginning the installation of a product.

All installations must completely comply with all NDL Industries warnings and instructions, national state and local codes and all applicable ANSI standards.

NDL Industries product specifications in U.S. customary units and metric are approximate and are provided for reference only. For precise measurements, please contact Customer

Service. NDL Industries reserves the right to change or modify product design, construction, specifications, or materials without prior notice and without incurring any obligation to make such changes and modifications on NDL products previously or subsequently sold.



Explore our full line of high-quality
HVAC-R, CO₂ Refrigeration, and Hydronic products.

ndlindustries.com | 1-866-635-6888 | sales@ndlinc.com

@ndlindustries





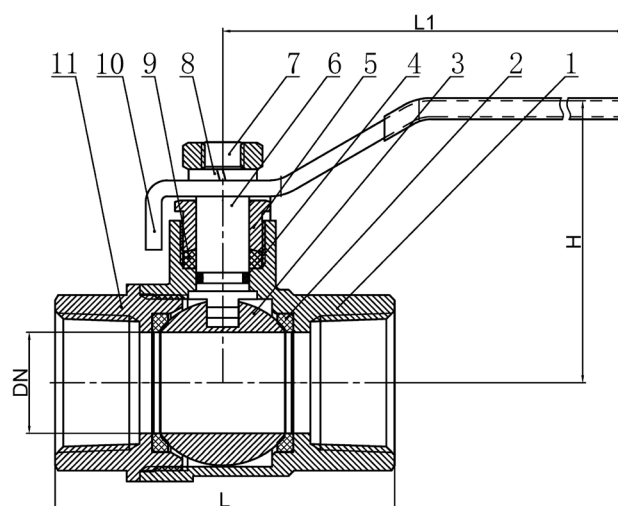
Water Threaded Ball Valves

Dimensions

	PART #	SIZE	DN (IN)	L (IN)	L1 (IN)	H (IN)	WEIGHT (LB)	WEIGHT (G)
	NSV-012	1/2"	0.389"	1.732"	3.424"	1.661"	0.417	189.1
	NSV-034	3/4"	0.584"	2.218"	3.424"	1.790"	0.683	309.8
	NSV-100	1"	0.739"	2.490"	4.241"	2.070"	1.071	485.8
	NSV-114	1-1/4"	0.973"	2.938"	4.241"	2.226"	1.585	718.9
	NSV-112	1-1/2"	1.245"	3.405"	5.564"	2.498"	2.28	1034.2
	NSV-200	2"	1.556"	3.833"	5.564"	2.712"	3.596	1631.1
	NSV-212	2-1/2"	1.918"	4.241"	5.564"	3.004"	6.98	3166.1
	NSV-300	3"	2.490"	5.467"	7.665"	4.202"	8.856	4017.0
	NSV-400	4"	2.860"	6.070"	8.093"	4.533"	17.531	7951.9

Materials

#	PART	MATERIAL
1	BODY	LF Brass
2	SEALS	PTFE
3	BALL	Stainless Steel
4	WASHER	NBR
5	PACKING NUT	Brass
6	STEM	Brass (1/4" - 2")
		Stainless Steel (2-1/2" - 4")
7	HANDLE NUT	Plated Steel
8	LOCK DEVICE	Plated Steel
9	PACKING	PTFE
10	HANDLE	Plated Steel
11	GLAND	LF Brass



The information contained herein is not intended to replace the full product installation and safety information available or the experience of a trained product installer. You are required to thoroughly read all installation instructions and product safety information before beginning the installation of a product.

All installations must completely comply with all NDL Industries warnings and instructions, national state and local codes and all applicable ANSI standards.

NDL Industries product specifications in U.S. customary units and metric are approximate and are provided for reference only. For precise measurements, please contact Customer

Service. NDL Industries reserves the right to change or modify product design, construction, specifications, or materials without prior notice and without incurring any obligation to make such changes and modifications on NDL products previously or subsequently sold.



Explore our full line of high-quality
HVAC-R, CO₂ Refrigeration, and Hydronic products.

ndlindustries.com | 1-866-635-6888 | sales@ndlinc.com

@ndlindustries





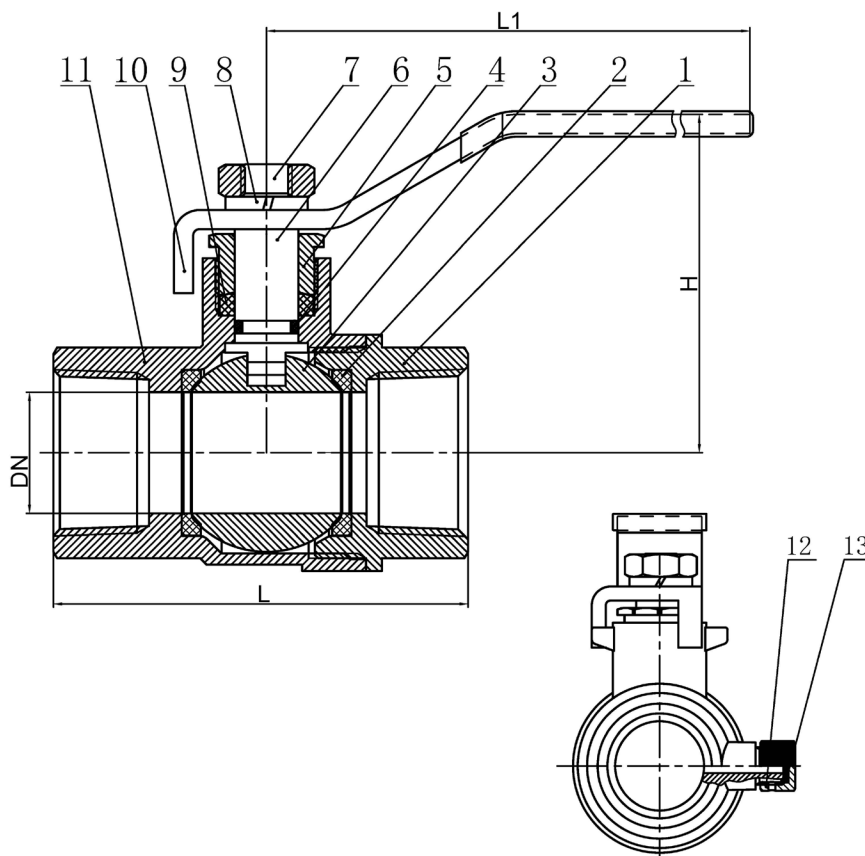
Water Threaded Ball Valves with Drain

Dimensions

	PART #	SIZE	DN (IN)	L (IN)	L1 (IN)	H (IN)	WEIGHT (LB)	WEIGHT (G)
	NTD-012	1/2"	0.584"	2.296"	3.424"	1.790"	0.507	230.0
	NTD-034	3/4"	0.739"	2.529"	4.241"	2.070"	0.787	357.0

Materials

#	PART	MATERIAL
1	GLAND	LF Brass
2	SEALS	PTFE
3	BALL	Stainless Steel
4	WASHER	NBR
5	PACKING	PTFE
6	STEM	Brass
7	HANDLE NUT	Plated Steel
8	LOCK DEVICE	Plated Steel
9	HANDLE	Plated Steel
10	PACKING NUT	Brass
11	BODY	LF Brass
13	SCREW	Brass
14	GASKET	EPDM



The information contained herein is not intended to replace the full product installation and safety information available or the experience of a trained product installer. You are required to thoroughly read all installation instructions and product safety information before beginning the installation of a product.

All installations must completely comply with all NDL Industries warnings and instructions, national state and local codes and all applicable ANSI standards.

NDL Industries product specifications in U.S. customary units and metric are approximate and are provided for reference only. For precise measurements, please contact Customer

Service. NDL Industries reserves the right to change or modify product design, construction, specifications, or materials without prior notice and without incurring any obligation to make such changes and modifications on NDL products previously or subsequently sold.



Explore our full line of high-quality
HVAC-R, CO₂ Refrigeration, and Hydronic products.

ndlindustries.com | 1-866-635-6888 | sales@ndlinc.com

@ndlindustries

