



NDL Industries

APPLICATIONSCommercial, Industrial, and Residential CO₂ Refrigeration

C194 Copper Ball Valves (CO₂-C)

NDL CO₂ ball valves perform unlike any other in its class for leak prevention, reliability, and superior field performance.



CO₂-C Specifications

Exceptional Safety Margins

Our valves can hold five times their maximum working pressure, netting a tremendous safety margin for any ball valve used in CO₂ systems.

Quality Tested

Each valve is helium tested at the factory to guarantee leak-free performance.

Bottom-Up Stem Installation

Our stem placement is engineered from the bottom up. If there is an accidental over-pressurization in the valve, it will not blow the stem out and lose the charge.

Stainless Steel Body

The NDL CO₂ valves feature a stainless steel body for stainless steel and copper-alloy connections.

Size and Connections

A wide range of sizes and connection types makes our valves compatible with main pipe types manufactured from copper iron alloys and stainless steel.

Unparalleled Two-year Warranty

Our warranty proves confidence, along with stamping every valve with a serial number and cleanly packaging in a poly-bag to prevent contamination and malfunctions.



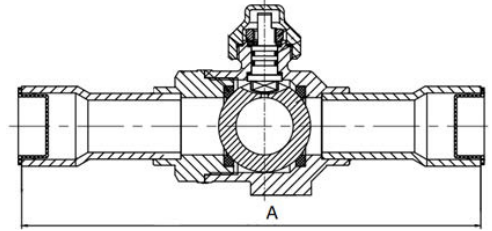
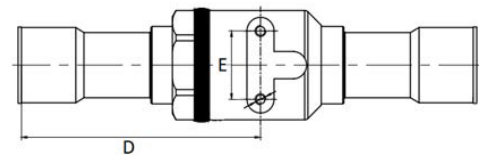
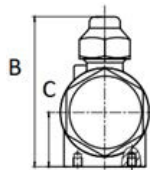
C194 Copper Ball Valves

Operating Specifications

- Temperature: -40° to 302°F (-40°C to 150°C)
- Burst Pressure: 5 times the working pressure
- Life Expectancy: >50,000 cycles

Certifications and Approvals

- RoHS
- CRN-approved
- CE-approved



CO₂-C Sizes, Kv/Cv, and Pressure Ratings

PART NUMBER	CONNECTION ODS		BALL PORT SIZE		MAXIMUM OPERATING PRESSURE	
	IN	MM	M3/H	GPM	BAR	PSI
CO2-02C	1/4"	10	0.8	0.9	140	2030
CO2-03C	3/8"	10	3	3.5	140	2030
CO2-04C	1/2"	10	5	5.8	140	2030
CO2-05C	5/8"	14	17	19.7	140	2030
CO2-06C	3/4"	18	17	19.7	140	2030
CO2-07C	7/8"	19	29	33.5	140	2030
CO2-09C	1-1/8"	25	51	59.0	140	2030
CO2-11C	1-3/8"	31	81	93.6	140	2030
CO2-13C	1-5/8"	37	105	121.4	120	1740
CO2-17C	2-1/8"	50	214	247.4	120	1740

